



DE WET & GREEN ENGINEERING PTY LTD
Engineering Excellence

CAPABILITY STATEMENT



De Wet & Green Engineering Pty Ltd

Welcome To De Wet & Green Engineering Pty Ltd “DGE”

DG Engineering is a privately-owned Australian Company, providing on-site engineering support services to the WA mining industry for over half a decade.

DG Engineering is proud to be a truly local company with its origins in Karratha, offering industry-leading engineering, delivering a full range of projects and on-site maintenance solutions to our clients, maximising equipment reliability and optimizing costs.

DGE have successfully delivered high-value projects for clients in all sectors from marine, petrochemical and mining.

Our in-house team of SME'S, Mechanical Engineers & Draftsmen coupled with our experienced Service Supervisors and various trade disciplines, support our mining projects Safely, and to the highest Quality.

We pride ourselves on our Safety record, our ability to deliver quality Projects, on time and on budget. We have a demonstrated capacity to deliver projects in remote and regional environments where access to resources are challenging and logistics and planning are paramount.

DGE has the knowledge, experience, expertise and tooling for all major projects with extensive experience in Bulk Materials Handling associated with all repairs and maintenance aspects on Apron Feeders, Car Dumpers, Stackers and Reclaimers.

DG Engineering Management and Leadership team have a combined 165+ years of mining experience. Including multiple Balance Machine Slew bearing change outs, Luff cylinder change outs and in excess of 30 Bucket wheel change outs between the leadership group.

DGE's depth of experience also extends to Fixed plant maintenance including Conveyor drives, Pulleys, Filter belts, Crushing and Screening, Structural Integrity works, Chute Upgrades.

Geographic Location

Perth Head Office:

- Senior Management Team
- SME, Superintendants
- Project Managers
- Accounts, Recruitment & HR
- HSE & Business Support

Karratha Facilities

- Local Base highly skilled execution team
- Two large workshops for overhauls, fabrication and coded welding
- Motion Australia Bearing and Parts stock
- Mobile equipment and Tooling base

SAFETY – QUALITY – SCHEDULE



Site Maintenance Services

- Industry leading Balance Machine SME's (Subject Matter Experts)
- Highly skilled and experienced Supervisors and Trades persons including Coded Welders
- Project works new installations and modifications
- Insitu rebuilds of major components
- Localised regional labour support
- Full equipped mobile tooling trucks & trailers
- Scheduling and long-term planning support
- Preventative and break down services
- Document writing methodologies for major SOW
- State of the art alignment equipment
- Data loggers / monitoring equipment for luff cylinder changeouts
- Major component change outs.

Workshop Services

- Break Down services
- Mechanical Engineering
- Component rebuilds
- Piping and spooling
- Coded welding services
- Pre-Assembly and component commissioning
- Workshop repairs and Rotable Spares
- Bogie rebuilds
- Major bucket rebuilds
- Mobile crushing and screening equipment repairs
- Chute and bin fabrication and liner packages
- Gear box rebuilds
- Pulley manufacturing and bearing installs
- General Fabrication

Other Services

- Motion Australia Bearing and Seal sales.
- Mechanical Engineering
- Project Management
- Long term planning
- MRD's – Methodologies SOW
- Engineering Design
- Surface Treatment - Sand Blasting and Painting
- Commissioning and start up support
- Site installation and commissioning on Bulk Materials handling equipment i.e. Car Dumpers, Stockyard machines and ship loaders



Our People

SAFETY – QUALITY – SCHEDULE

Our culture is about working together to get the job done, about being accountable and acting with integrity.

We focus on **innovation and efficiency** and reward those who passionately work toward realising our vision.

We pride ourselves on creating an **inclusive, safe, and enjoyable workplace**. We live by our value of “People First” and ensure our safety systems, risk management processes and workplace approach to safety continuously improves to enhance the wellbeing of our people.

Our **Safety ahead of Production** approach enables us to maintain safe production and a low Total Recordable Injury Frequency Rate (TRIFR) by industry standards. Our growing team of skilled, onsite maintenance teams, project managers, tradesperson and offsite support staff and planners, are uniquely set up to provide a successful project execution.

We know it takes a **whole organisation approach** to achieve the performance results and level of service required **to be number one** in what we do.

We are **flexible and operate with agility** to problem solve and meet the needs of our stakeholders, whilst continuing to build our client’s trust by delivering on our promises.



At DGE, there is no substitute for Safety, with a current impressive Man Hours LTI free total.

DGE is continually invested in its employee's safety and utilise real time data to ensure the safest possible working environment for its employees.

Our people will always go the extra mile to ensure we meet and exceed expectations. We have some of the best minds in the business and we understand exactly what it takes to optimize customers' equipment and plants.

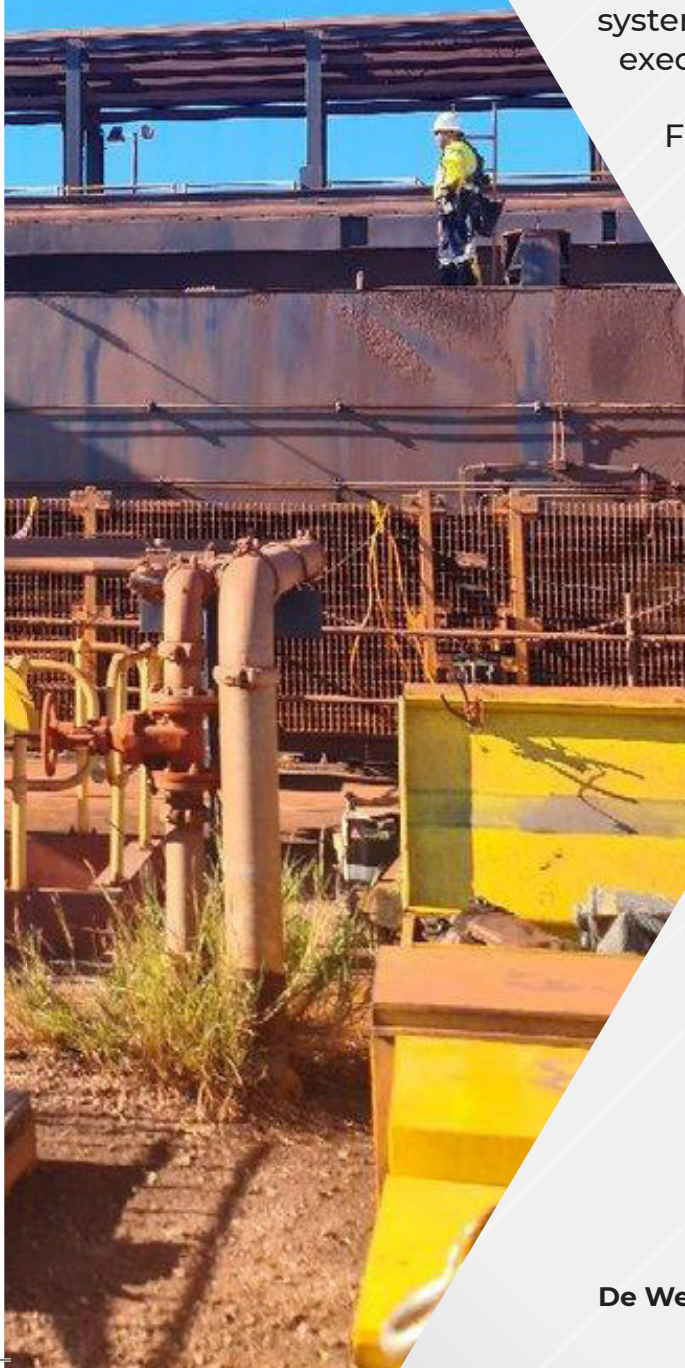
All DGE Employee's abide by our company Mantra;

SAFETY – QUALITY – SCHEDULE

DGE's live and comprehensive Safety Management system allows us to monitor and manage the safe execution of work fronts.

From Pre-Starts to Comprehensive JHA's, this live tracking, allows Management to further mentor and coach all our employees to ensure the Safety Culture within DGE is continually evolving to a higher standard.

Comprehensive data can be reported for Client specific requirements.



Our Projects

- **RTIO Parker Point** - REC3P Bucketwheel Changeout Jan 2024
- **Roy Hill Port** - Major Shutdown Works
- **RTIO Parker Point** - REC2P Bucket wheel Changeout
- **RTIO Hope Downs 4** - Dual Luff Cylinder Changeout
- **RTIO Hope Downs 1** - Dual Conrod Changeout
- **RTIO Marandoo** - Dual Luff Cylinder Changeout
- **RTIO Hope Downs 1** - Bucketwheel Changeout
- **RTIO Paraburdoo Bridge Reclaimer** - RCL 2 Bucketwheel Changeout
- **RTIO Dampier** - Salt Ship loader Slew Bearing changeout



Roy Hill

- **4 x Roy Hill Port** - Major Shutdown Works
- Ring Rail Changeout
- Gravity Clamp Changeout
- Major Drive Changeouts
- Specialised Coded Welding

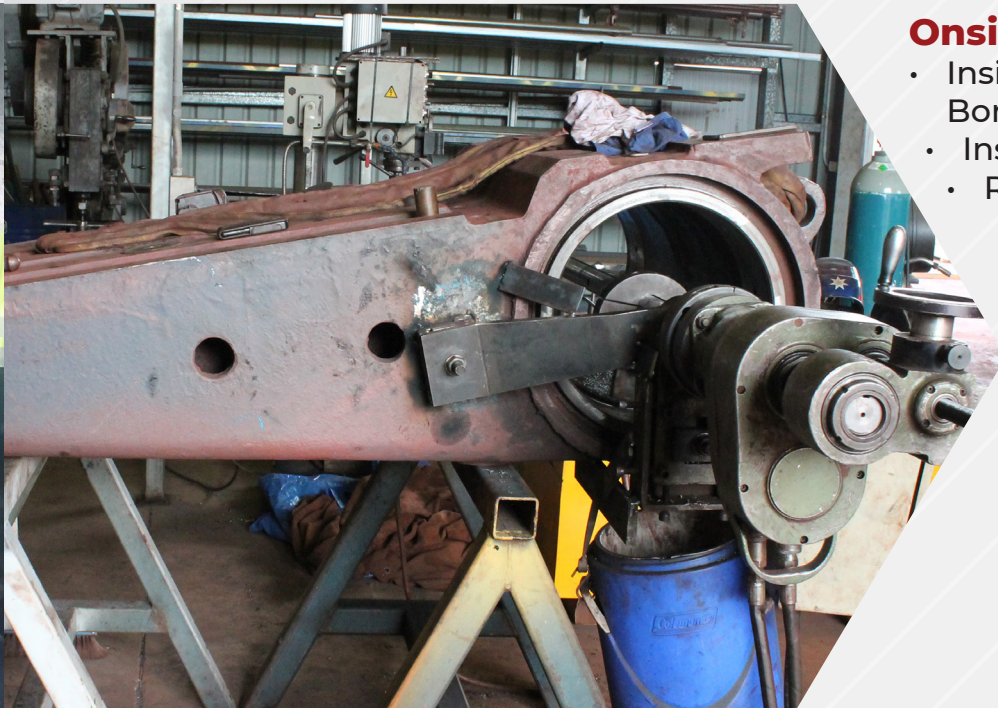
Crushers

- Major Componentry changeout to Gyratory, Cone, Jaw, HPGR's including;
- Mainframes
- Eccentric Assemblies
- Head and Bowl Liners
- Drive assemblies and drive unit

Our Projects

Apron Feeder Changeout

- Complete Feeder refurbishment
- Componentry changeout incl Head & Tail assemblies, Carry Rollers
- Drive unit changeouts.
- Cribble Conveyor refurbishment/ replacement



Onsite Machining

- Insitu and Workshop based Line Boring
- Insitu welding and machining
- Restoration of Bearing Bores and Pin diameters to OEM specifications
- Insitu Milling
- Fast, precise, accurate
- Minimal downtime
- Cost effective solution.
- Earthmoving equipment, fixed plant, Mobile equipment

Bogie Changeout

- Remove, replace & install Drive Assemblies
- Remove, replace & install Bogie Assemblies
- Insitu Bogie refurbishment
- Remove, replace & install Drive units.
- Insitu Line Boring



Our Business Partners



Associate Businesses



DE WET & GREEN ENGINEERING PTY LTD
Engineering Excellence

WA Head Office
Unit 3/7 Tully Road
East Perth, WA 6004
Australia

+61 (8) 6556 7939
info@dgengineering.com.au

Updated 04/04/24